



The Treatment of Psychosis from a Family Perspective

*Interaction between the individual,
next to kind and mental health professionals*



The international society for the psychological treatments of the schizophrenias and other psychoses
6th NATIONAL CONFERENCE HAMAR, 4.-5.th FEB 2010

In cooperation with



HELSE  SØR-ØST

THURSDAY 4. FEBRUARY

- 08.30-10.00 Registration
Coffee/tea
- 10.00-10.30 Opening lecture, leader ISPS **Anne Lise Øxnevad**
- 10.30-10.45 Cultural interlude
- 10.45-11.45 **Kirsti R. Haaland** "Developmental conditions for children - is it different to grow up in the 21st century?"
- 11.45-12.00 Break for coffee/tea
- 12.00-13.00 **Kirsti R. Haaland** "Family concerns, a loss of framework?"
- 13.00-14.00 Lunch
- 14.00-14.45 **Arnhiid Lauveng** "Someone knows another story – on the important cooperation between family, patient and helpers"
- 14.45-15.30 **Else-Marie Løberg** "Recent knowledge on stress, trauma and neurocognition in schizophrenia: Implications for family services"
- 15.30-15.45 Break
- 15.45-16.30 **Anne Fjell** "Family work and psychosis. The role of the family in the treatment process. Conditions for Success"
- 16.30-17.30 Annual General Meeting if ISPS
- 19.00-
Aperitif and cultural interlude in the bar.
Gala dinner

FRIDAY 5. FEBRUARY

- 09.00-09.15 Welcome speech by **Anne Helen Raastad**, LPP
- 09.15-09.30 Cultural interlude
- 09.30-11.30 **Brian Martindale** "Dare we look more at the issues of guilt in psychosis?"
- 11.30-12.00 Break and checkout
- 12.00-12.30 Comments on today's lectures
- 12.30-13.30 **Arne Johan Vetlesen** "Vulnerability under pressure"
- 13.30-
Lunch

FAMILY INTERVENTION AT THE DEPARTMENT OF TREATMENT OF PSYCHOSIS AND REHABILITATION



The Department of treatment of psychosis and rehabilitation is the largest in Division of psychiatric health care in Innlandet Hospital Trust. The department has devices in Sanderud in Hedmark County and two places in Oppland County, Reinsvoll and Hedalen (Fekjær).

The departments' main objectives are to offer people with psychosis disorder an active and holistic healthcare and rehabilitation. The department includes: Section for early intervention in psychosis, Section for resource- and security and Section for rehabilitation. These Sections has a wide range of treatment approaches. The main approach is on environmental therapy, individual therapy, medicational therapy and psychoeducatives approaches.

In both healthcare and rehabilitation is collaboration considered as an important part. It includes patients, relatives and employed were everybody are important contributors. The family is an important resource. The department has a program that helps out evolving our family intervention and evaluates it. Every section has made there own written routines for collaboration where relatives automatically are included as partners in the healthcare.

Approaches as multiple family groups, educational seminars, support conversations and individual coaching for patients and relatives, are additional approaches in our department. We try too give specialised care too children of parents with a psychiatric disease and cousins under 18 years. There has recently been a major research- and development project with focus on collaboration between employs and relatives.



Photo: Annar Bjørgli

Arnhild Lauveng Psychologist

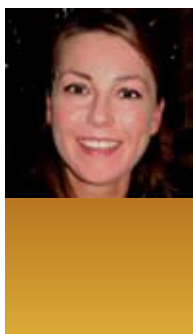
Worked as a clinical psychologist since 2003. Is an active speaker and author. Has, among other publications, written two books, which describes her own experience as a patient in psychiatric care in adolescence. The titles are "I morgen, var jeg alltid en løve" (Cappelen, 2005) and "Unyttig som en rose" (Cappelen, 2006).

The book "Arbeidsmaus med gipset hjerte" (Universitetsforlaget 2008) discusses the topic mental health and employment. She has received several awards, including Free Words Honour in 2008.



Anne Fjell Special consultant in family intervention and clinical social worker

Project manager in both "Psychosis project" at SSBU (1988-1992) and for the family intervention in the "TIPS-project" (1997-2000). Is currently on staff at the Regional Center for early intervention in psychosis, TIPS Sør-Øst. Main tasks are knowledge monitoring and to integrate optimal family intervention for psychosis. She is engaged in teaching and advising family interventions for psychosis in Denmark, Switzerland and England.



Else-Marie Løberg PhD associate professor and specialist in psychology

Has worked with schizophrenia and psychosis from a combined clinical and research-related point of view. She is a specialist in clinical adult psychology, where she focuses on a relationship based clinical basis, combined with a neuroscientific research focus. She works as a manager and researcher at the Division of Psychiatry at Bergen Hospital Trust and she also is an associate professor at the Cognitive Neuro Science group at the Psychological Sciences, University of Bergen (UIB).



Kirsti Ramfjord Haaland Specialist in psychology with specialization in family psychology

Currently she is the director at Institute for familypsychology. She teaches and coaches at Institute for Active Psychology and she has been associate professor at University in Oslo (UIO) and psychologist at Østensjø Family-office.



Arne Johan Vetlesen Professor in philosophy, University in Oslo (UIO)

Working in ethics, social philosophy and political philosophy in borderland towards the social science. Has written 18 books, on subjects as the importance of empathy for moral behaviour, about evil and views of freedom in our time. Has published numerous articles and has guided graduate students during their theses at the Faculty of Philosophy at the UIO. Last book is "Frihetens forvandling" (2008).



Brian Martindale Consultant Psychiatrist to the South of Tunes Early Intervention in Psychosis Service in North East England

He previously worked in London as an NHF Consultant Psychotherapist and in private practice as psychoanalyst. He is the ISPS book series editor which now has ten books out on psychological approaches to psychosis. He is also on the board of ISPS. Amongst other publications, he is senior editor of Psychosis: Psychological Approaches and their Effectiveness (Gaskell). In 2009, he received the award for Outstanding Professional Leadership from the British Psychoanalytic Council.

REGISTRATION FOR THE ISPS CONFERENCE IN HAMAR

Rica Hotel Hamar, Norway, 4.-5. february 2010

Name: Position/Title:

Place of work:

Tel. work: Mobile:

E-mail:

Invoice adress:

(TICK AS REQUIRED)

- Conference 2 days** incl. cultural arrangement Thursday evening,
lunch both days NOK 2.695,-
 - Conference 1 day** incl. cultural arrangement Thursday evening,
and lunch NOK 1.695,-
 - Gala dinner Thursday**, Rica Hotel Hamar NOK 650,-
- Please notify and special requirements for lunch and dinner when registering

Registration is binding and must be sent to:

E-mail: isps@sykehuset-innlandet.no (preferred method of registration)

Fax: +47 62 58 14 01

Surface mail: Sykehuset Innlandet HF, Divisjon Psykisk helsevern,
Avdeling for psykosebehandling og rehabilitering,
Postboks 68, N-2312 Ottestad, Norway (mark envelope ISPS)

Registration deadline 18. December 2010

Hotel reservations must be made by participants. Remember to quote ISPS to take advantage of the special prices shown below.

Rica Hotel Hamar: (prices are quoted per person)

Price single room, incl. breakfast NOK 845,-

Price double room, incl. breakfast NOK 645,-

Tel: +47 62 35 01 00, e-mail: rica.hotel.hamar@rica.no, www.rica.no